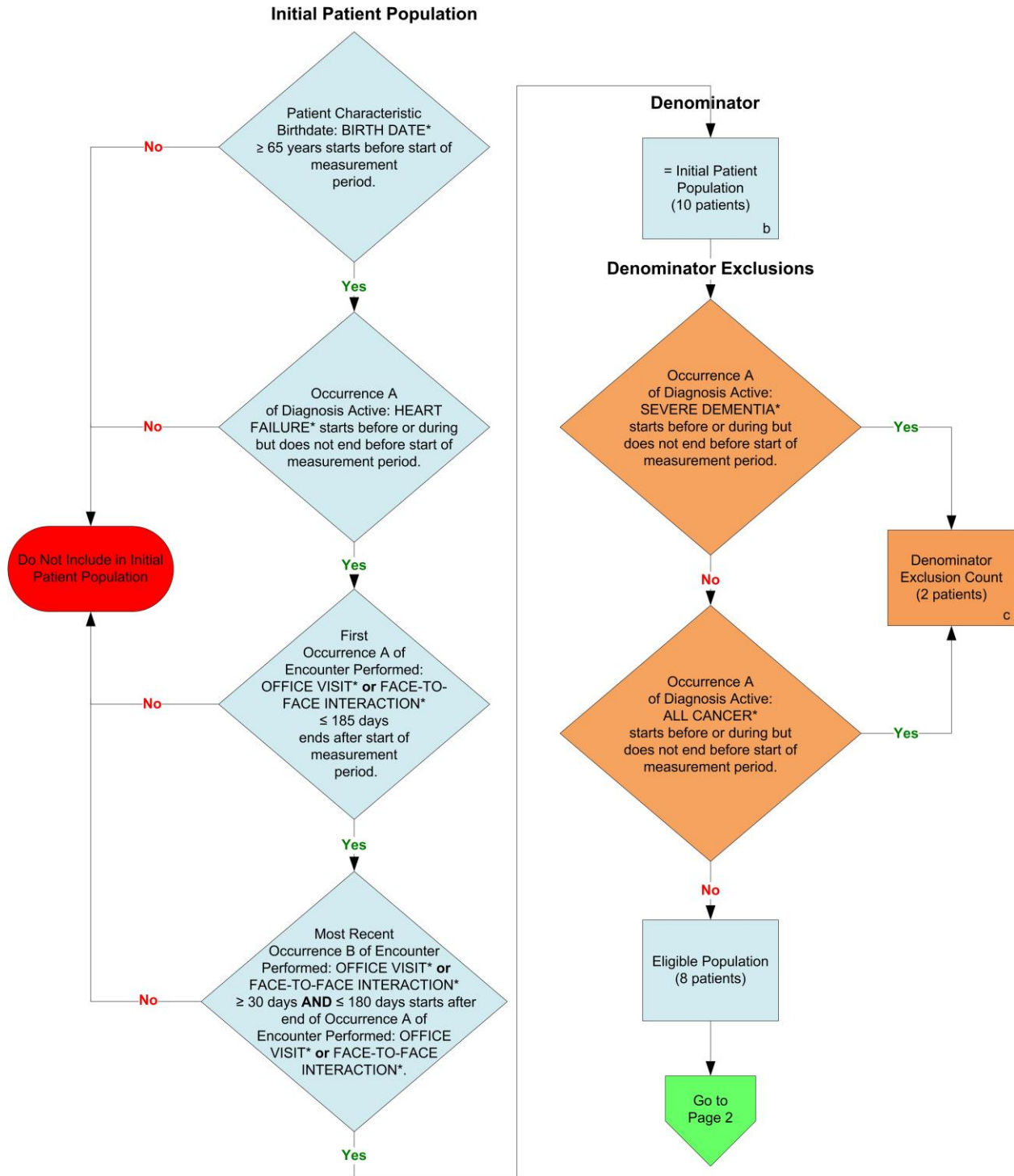
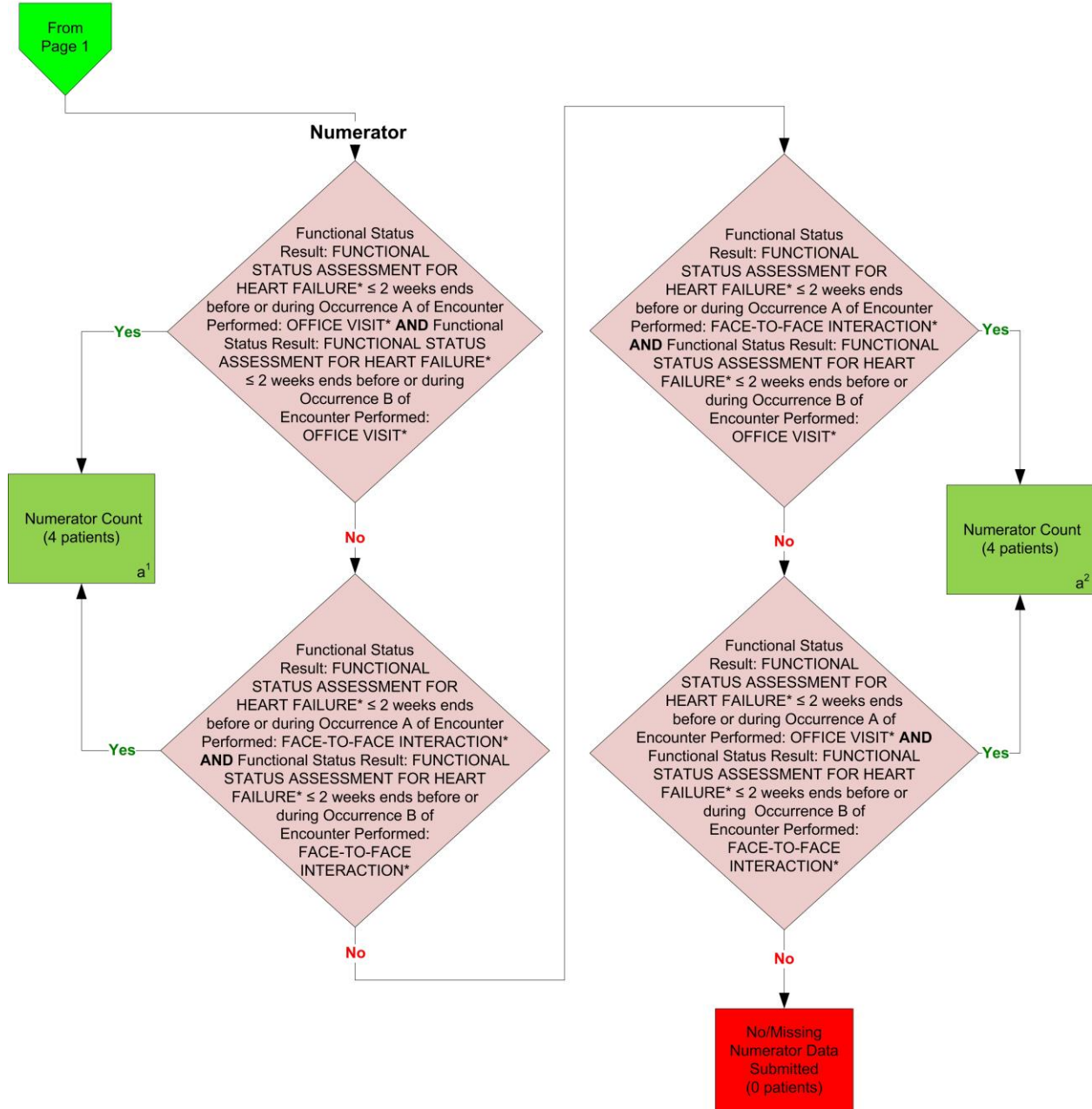


2014 eCQM Flow  
Measure Identifier: CMS90v4  
Functional Status Assessment for Complex Chronic Conditions



\*Please refer to the specific section of the eCQM to identify the QDM data elements and associated value sets for use in reporting this eCQM.

2014 eCQM Flow  
Measure Identifier: CMS90v4  
Functional Status Assessment for Complex Chronic Conditions



\*Please refer to the specific section of the eCQM to identify the QDM data elements and associated value sets for use in reporting this eCQM.

**SAMPLE CALCULATION:**

**Performance Rate =**  

$$\frac{\text{Numerator } (a^1 + a^2 = 8 \text{ patients})}{\text{Denominator } (b=10 \text{ patients}) - \text{Denominator Exclusions } (c=2 \text{ patients}) - \text{Denominator Exceptions } (N/A)} = 100.00\%$$

2014 eCQM Flows  
Measure Identifier: CMS90v4  
Functional Status Assessment for Complex Chronic Conditions

Please refer to the specific section of the eCQM to identify the QDM data elements and associated value sets for use in reporting this eCQM.

1. Start Initial Patient Population
2. Check Patient Characteristic Birthdate:
  - a. If the QDM data element, BIRTH DATE, is greater than or equal to 65 years of age before the start of the measurement period equals No, do not include in Initial Patient Population. Stop Processing.
  - b. If the QDM data element, BIRTH DATE, is greater than or equal to 65 years of age before the start of the measurement period, equals Yes, continue processing and proceed to check Diagnosis Active.
3. Check Diagnosis Active:
  - a. If Occurrence A of the QDM data element HEART FAILURE starts before or during but does not end before start of measurement period equals Yes, proceed to check Encounter Performed.
  - b. If Occurrence A of the QDM data element HEART FAILURE starts before or during but does not end before start of measurement period equals No, do not include in Initial Patient Population and Stop Processing.
4. Check Procedure Performed:
  - a. If First Occurrence A of QDM data element, OFFICE VISIT less than or equal to 185 days ends after start of measurement period OR First Occurrence A of QDM data element FACE-TO-FACE INTERACTION, less than or equal to 185 days ends after start of measurement period equals Yes, include in Initial Patient Population and continue on to next Encounter Performed.
  - b. If First Occurrence A of QDM data element, OFFICE VISIT, less than or equal to 185 days ends after start of measurement period OR if First Occurrence A of QDM data element FACE-TO-FACE INTERACTION less than or equal to 185 days ends after start of measurement period equals No, do not include in Initial Patient Population and Stop Processing.

5. Check Encounter Performed:
- a. If Most Recent Occurrence B of QDM data element, OFFICE VISIT greater than or equal to 30 days starts after end of Occurrence A of OFFICE VISIT AND Most Recent Occurrence B of QDM data element OFFICE VISIT less than or equal to 180 days starts after end of Occurrence A of QDM data element OFFICE VISIT equals Yes, include in the Initial Patient Population and proceed to Denominator.
  - b. If Most Recent Occurrence B of QDM data element, OFFICE VISIT greater than or equal to 30 days starts after end of Occurrence A of OFFICE VISIT AND Most Recent Occurrence B of QDM data element OFFICE VISIT less than or equal to 180 days starts after end of Occurrence A of QDM data element OFFICE VISIT equals No, proceed to check next Encounter Performed.
  - c. If Most Recent Occurrence B of QDM data element, FACE-TO-FACE INTERACTION greater than or equal to 30 days starts after end of Occurrence A of OFFICE VISIT AND Most Recent Occurrence B of QDM data element FACE-TO-FACE INTERACTION less than or equal to 180 days starts after end of Occurrence A of QDM data element OFFICE VISIT equals Yes, include in the Initial Patient Population and proceed to Denominator.
  - d. If Most Recent Occurrence B of QDM data element, FACE-TO-FACE INTERACTION greater than or equal to 30 days starts after end of Occurrence A of OFFICE VISIT AND Most Recent Occurrence B of QDM data element FACE-TOFACE INTERACTION less than or equal to 180 days starts after end of Occurrence A of QDM data element OFFICE VISIT equals No, proceed to check next Encounter Performed.
  - e. If Most Recent Occurrence B of QDM data element, OFFICE VISIT greater than or equal to 30 days starts after end of Occurrence A of FACE-TO-FACE INTERACTION AND Most Recent Occurrence B of QDM data element OFFICE VISIT less than or equal to 180 days starts after end of Occurrence A of QDM data element FACE-TO-FACE INTERACTION equals Yes, include in the Initial Patient Population and proceed to Denominator.

- f. If Most Recent Occurrence B of QDM data element, OFFICE VISIT greater than or equal to 30 days starts after end of Occurrence A of FACE-TO-FACE INTERACTION AND Most Recent Occurrence B of QDM data element OFFICE VISIT less than or equal to 180 days starts after end of Occurrence A of QDM data element FACE-TO-FACE INTERACTION equals No, proceed to check next Encounter Performed.
  - g. If Most Recent Occurrence B of QDM data element, FACE-TO-FACE INTERACTION greater than or equal to 30 days starts after end of Occurrence A of FACE-TO-FACE INTERACTION AND Most Recent Occurrence B of QDM data element FACE-TO-FACE INTERACTION less than or equal to 180 days starts after end of Occurrence A of QDM data element FACE-TO-FACE INTERACTION equals Yes, include in the Initial Patient Population and proceed to Denominator.
  - h. If Most Recent Occurrence B of QDM data element, FACE-TO-FACE INTERACTION greater than or equal to 30 days starts after end of Occurrence A of FACE-TO-FACE INTERACTION AND Most Recent Occurrence B of QDM data element FACE-TO-FACE INTERACTION less than or equal to 180 days starts after end of Occurrence A of QDM data element FACE-TO-FACE INTERACTION equals No, do not include in Initial Patient Population and stop processing.
- 6. Start Denominator
  - a. Denominator equals the Initial Patient Population. Denominator is represented by the letter B in the sample calculation listed at the end of this document. Letter B equals 10 patients in the sample calculation.
- 7. Start Denominator Exclusions
- 8. Check Diagnosis Active:
  - a. If Occurrence A of the QDM data element SEVERE DEMENTIA starts before or during but does not end before start of measurement period equals Yes, include in Denominator Exclusion count. Denominator Exclusion is represented by letter C in the sample calculation listed at the end of this document. Letter C equals 2 patients in the sample calculation.
  - b. If Occurrence A of the QDM data element SEVERE DEMENTIA starts before or during but does not end before start of measurement period equals No, proceed to check next Diagnosis Active.

- c. If Occurrence A of the QDM data element ALL CANCER starts before or during but does not end before start of measurement period equals Yes, include in Denominator Exclusion count. Denominator Exclusion is represented by letter C in the sample calculation listed at the end of this document. Letter C equals 2 patients in the sample calculation.
- d. If Occurrence A of the QDM data element ALL CANCER starts before or during but does not end before start of measurement period equals No, proceed to Numerator.

#### 9. Start Numerator

#### 10. Check Functional Status Result:

- a. If QDM data element FUNCTIONAL STATUS ASSESSMENT FOR HEART FAILURE less than or equal to 2 weeks ends before or during Occurrence A of QDM data element OFFICE VISIT AND if QDM data element FUNCTIONAL STATUS ASSESSMENT FOR HEART FAILURE less than or equal to 2 weeks ends before or during Occurrence B of QDM data element OFFICE VISIT equals Yes, include in Numerator count. Numerator is represented by letter A<sup>1</sup> in the sample calculation listed at the end of this document. Letter A<sup>1</sup> equals 4 patients in the sample calculation.
- b. If QDM data element FUNCTIONAL STATUS ASSESSMENT FOR HEART FAILURE less than or equal to 2 weeks ends before or during Occurrence A of QDM data element OFFICE VISIT AND if QDM data element FUNCTIONAL STATUS ASSESSMENT FOR HEART FAILURE less than or equal to 2 weeks ends before or during Occurrence B of QDM data element OFFICE VISIT equals No, proceed to check next Functional Status Result.
- c. If QDM data element FUNCTIONAL STATUS ASSESSMENT FOR HEART FAILURE less than or equal to 2 weeks ends before or during Occurrence A of QDM data element FACE-TO-FACE INTERACTION AND if QDM data element FUNCTIONAL STATUS ASSESSMENT FOR HEART FAILURE less than or equal to 2 weeks ends before or during Occurrence B of QDM data element FACE-TO-FACE INTERACTION equals Yes, include in Numerator count. Numerator is represented by letter A<sup>1</sup> in the sample calculation listed at the end of this document. Letter A<sup>1</sup> equals 4 patients in the sample calculation.
- d. If QDM data element FUNCTIONAL STATUS ASSESSMENT FOR HEART FAILURE less than or equal to 2 weeks ends before or during Occurrence A of QDM data element FACE-TO-FACE INTERACTION AND if QDM data element FUNCTIONAL STATUS ASSESSMENT FOR HEART FAILURE less than or equal to 2

weeks ends before or during Occurrence B of QDM data element FACE-TO-FACE INTERACTION equals No, proceed to check next Functional Status Result.

- e. If QDM data element FUNCTIONAL STATUS ASSESSMENT FOR HEART FAILURE less than or equal to 2 weeks ends before or during Occurrence A of QDM data element FACE-TO-FACE INTERACTION AND if QDM data element FUNCTIONAL STATUS ASSESSMENT FOR HEART FAILURE less than or equal to 2 weeks ends before or during Occurrence B of QDM data element OFFICE VISIT equals Yes, include in Numerator count. Numerator is represented by letter A<sup>2</sup> in the sample calculation listed at the end of this document. Letter A<sup>2</sup> equals 4 patients in the sample calculation.
- f. If QDM data element FUNCTIONAL STATUS ASSESSMENT FOR HEART FAILURE less than or equal to 2 weeks ends before or during Occurrence A of QDM data element FACE-TO-FACE INTERACTION AND if QDM data element FUNCTIONAL STATUS ASSESSMENT FOR HEART FAILURE less than or equal to 2 weeks ends before or during Occurrence B of QDM data element OFFICE VISIT equals No, proceed to check next Functional Status Result.
- g. If QDM data element FUNCTIONAL STATUS ASSESSMENT FOR HEART FAILURE less than or equal to 2 weeks ends before or during Occurrence A of QDM data element OFFICE VISIT AND if QDM data element FUNCTIONAL STATUS ASSESSMENT FOR HEART FAILURE less than or equal to 2 weeks ends before or during Occurrence B of QDM data element FACE-TO-FACE INTERACTION equals Yes, include in Numerator count. Numerator is represented by letter A<sup>2</sup> in the sample calculation listed at the end of this document. Letter A<sup>2</sup> equals 4 patients in the sample calculation.

- h. If QDM data element FUNCTIONAL STATUS ASSESSMENT FOR HEART FAILURE less than or equal to 2 weeks ends before or during Occurrence A of QDM data element OFFICE VISIT AND if QDM data element FUNCTIONAL STATUS ASSESSMENT FOR HEART FAILURE less than or equal to 2 weeks ends before or during Occurrence B of QDM data element FACE-TO-FACE INTERACTION equals No, include in the No/Missing Numerator Data Submitted count and stop processing.

**SAMPLE CALCULATION:**

**Performance Rate =**

Numerator ( $a^1 + a^2 = 8$  patients)

÷

Denominator (b=10 patients) – Denominator Exclusions (c=2 patients) – *Denominator Exceptions (N/A)*

**= 100.00%**